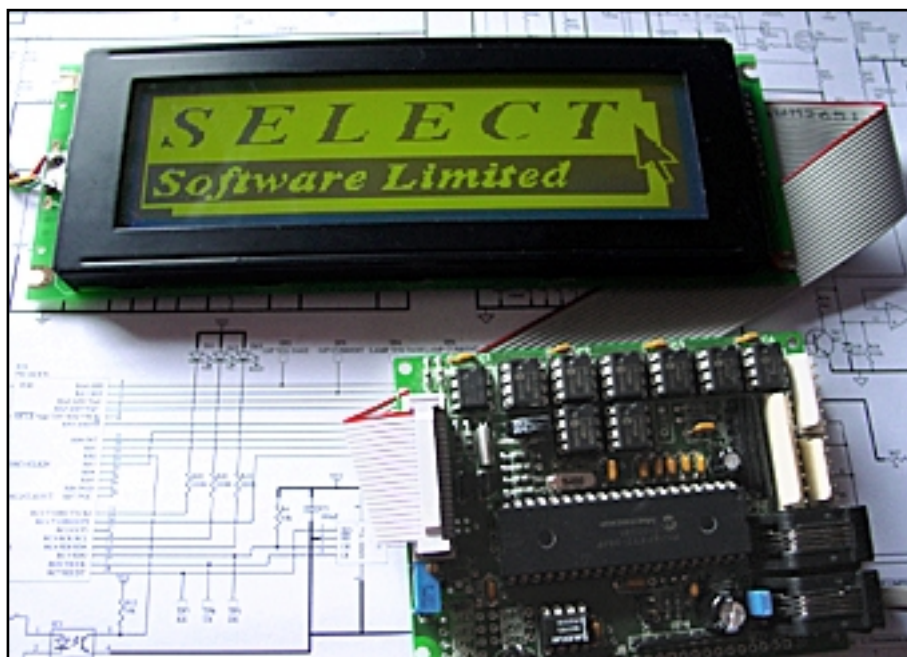


# ImageLink™

## LCD driver module

---



### LCD driver module and custom software

ImageLink™ from Select Software Limited is a feature-packed driver module and software package designed to offer total control of LCD displays. ImageLink™ displays text and graphics that can be linked to external switches, controls and sensors. Features include 256K EEPROM memory, on board real time clock (RTC) with memory backup and networking capability.

ImageLink™ comes with its own Windows Software for controlling text, image displays and system ROM configurations.

ImageLink™ is available in two configurations - the 'standard package' and the 'developer's kit' (see overleaf for details).

### Product Features and Specification

- On board RTC
- RTC Memory Backup when power is removed
- On board Backlight Control
- 256K EEPROM for image/text storage
- RS485 or RS232 Serial Communications
- Serial Protocol for control of all aspects of the display
  
- CUSTOM WINDOWS SOFTWARE:
  - TEXT+: Text Creation and Editing Application
  - PAINT+: Image Creation and Editing Application
  - FLASH: Text and Image File Download Manager
  - FIRMBOOT: Program Code Download Manager (available with Developer's Kit only)
  - CONTROL SOFTWARE: to demo functions prior to product build
  
- Range of Analogue Inputs
- 8 Digital Inputs
- Interfaces to any display, at any size via a Toshiba controller
- 9 - 15 Volt supply input
- RS485 modules can be networked to control up to 63 ImageLink™ modules
- Support of Broadcast Network Messages, i.e. multiple displays updated at once from one network command



The ImageLink™ driver module is available with a choice of two software configurations as follows:

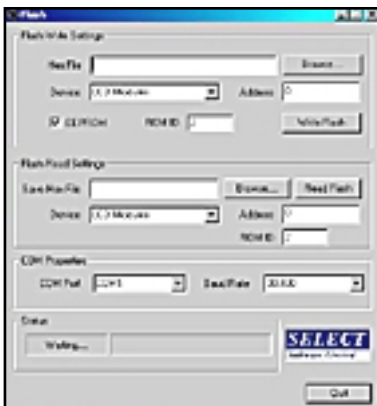
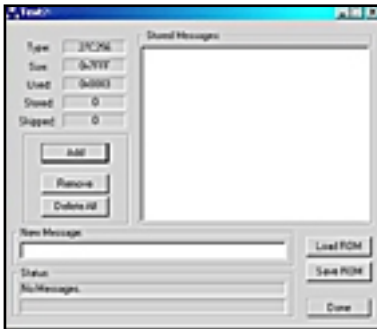
## Standard Package

Includes custom Windows utilities which gives users exceptional levels of control, creativity and efficiency over the content of the LCD display. Text and images can be created, edited, stored and downloaded to the EEPROM. It's everything you need in one package including the following:

**Text+** Allows text strings or messages to be created and then downloaded directly into the onboard EEPROM. Large amounts of message text can be stored and called up anywhere on the LCD display. Text+ removes the need to send text strings and messages via the serial port. This speeds up the whole system.

**Paint+** A valuable and time-saving application used for generating Images. PAINT+ converts and stores any monochrome bitmap (BMP) image in a downloadable 6 or 8 bit file. A major advantage when developing images. PAINT+ lets you re-touch, manipulate and preview images prior to committing them to memory.

**Flash** Enables the developer to download image and text into the Display Controller. The ImageLink™ Display Controller has up to 256K of EEPROM which can be partitioned into as many different areas as the developer wants. This gives developers the control and flexibility to create custom configurations, such as a System area for standard system bitmaps (e.g. a clock and company logo), an Image area which can be used for any type of image (e.g. status or operating information) and a Text area which can contain text messages (such as 'press enter to continue').



## Developer's Kit

The ImageLink™ Developer's Kit is available under licence. It includes everything in the standard package plus the module's C source code and additional FIRMBOOT software. Contact the supplier for more details.

**Firmware** The Firmware application allows for downloading of program code into the Microcontroller. This is a significant breakthrough - not only does it enable the developer to write their own software to run on the ImageLink™ LCD Driver Module, but it also gives the power to update the software on site.



Click the logo to visit the Select Software Limited web site.



Software and Hardware Development

Manor Farm, Home Farm Road, Ellingham, Bungay, Suffolk, NR35 2EL, UK. • Tel: +44 (0)1508 518112 • Fax: +44 (0)1508 518113 • email: sales@selectsoftware.net

FOR SALES OR ANY FURTHER INFORMATION PLEASE CONTACT: